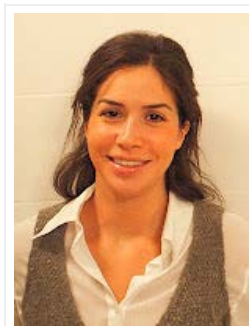




WEDNESDAY, JANUARY 18, 2012

Social Entrepreneurship on the Rise in Turkey

By [Zeynep Meydanoglu](#) and [Matthias Scheffelmeier](#)



The last decade has seen the rise of Turkey as a regional and global leader with a dynamic and strong economy. At the same time, Turkey has also been facing critical development and



democratization goals with poor track records in human rights, women's empowerment, its treatment of its minorities and journalists.

Can social entrepreneurship - with its potential to identify the right points of intervention – be just what Turkey needs to become a country where everyone can contribute to social change?

This was the question on the minds of everyone last month when prominent members of the American-Turkish diaspora – business leaders, students, academicians, lawyers, doctors and artists - gathered for a roundtable discussion on the future and potential of social entrepreneurship in Turkey. Contributions of Turkey's leading social entrepreneurs, Ashoka founder Bill Drayton and Ashoka Fellows Ibrahim Betil and Nasuh Mahruki, declared the answer to be "yes".

[Ibrahim Betil](#), trained as an industrialist and banker, presented a prime example of how a country like Turkey can leverage its growing capacity in the business and social sectors: invest in its young population. This is what Ibrahim did ten years ago. In 2001, he turned his attention to putting in place opportunities for young adults to contribute to positive social action through their own initiative. He founded TOG- Community Volunteers Foundation of Turkey a leading youth organization touching the lives of thousands of youth in 90 universities across the country.

[Nasuh Mahruki](#), an author, photographer and the first Turk to climb Mount Everest presented AKUT- Search and Rescue Association Turkey's leading search and rescue organization. AKUT has not only saved countless lives but also has become a symbol promoting volunteerism, leadership, and civic initiative in the country. "We push our volunteers toward the deep realization that ordinary people can and must take ownership of their safety in crisis situations" says Nasuh "and by focusing on safety, an issue that is critical to men and women of all backgrounds, we make a broad change in public conceptions about the roles and responsibilities of citizenship".

[Bill Drayton](#) highlighted that the emergence of these leaders in societies was no coincidence. "By 1980, there was a new generation coming up that was tired of

WELCOME TO TPF!

Turkish Philanthropy Funds (TPF) help donors realize philanthropic goals to meet community needs in the US and in Turkey. TPF funds the most effective programs, and partners with them to maximize results. TPF is a 501(c)(3) public charity, and takes great pride in its financial efficiency and accountability. TPF Blog is an informal forum for TPF team and supporters to exchange ideas and explore the social needs in our communities, the solutions addressing them and the high-impact accomplishments.

To Subscribe, please [Sign-Up](#)

[TPF HOME PAGE](#)

TPF'S FAN BOX

facebook

Turkish Philanthropic Fund

You like this. · Admin Page · Insights · **Error**

You like this. · Admin Page · Insights · **Error**

2,043 people like **Turkish Philanthropic Fund**. 2,042 people like **Turkish Philanthropic Fund**.

Gülşah

Erçument

Sibel

Elif

Turkish Philanthropic Fund on Facebook

TWITTER

Turkish Philanthropy **tphilanthropy**

[tphilanthropy](#) RT @JoshRuxin: What makes international philanthropy work: ow.ly/96s4t
10 minutes ago · reply · retweet · favorite

[tphilanthropy](#) Did you see our contest on empowering Turkish girls? Vote for the best project, a Turkish NGO will get \$10K on fb.me/yAWp0u
22 minutes ago · reply · retweet · favorite

[tphilanthropy](#) We love this Turkish [@changemakers](#) [youtu.be/KwOT7FNfpc8](#) [@farkyaranlar](#) [@trchangemakers](#)
18 hours ago · reply · retweet · favorite

[GirlUp A8](#) Educated girls have fewer children, later in life. And those children are more likely to go to school and receive health care. [#wiwchat](#)
18 hours ago · reply · retweet · favorite

the inefficiencies of the older order," Drayton says. "We could see that the historical moment had come for transformation." It was a point that was repeated by Ibrahim and Nasuh. They emphasized the importance of social entrepreneurs in encouraging others to become engaged citizens and changemakers. "Each social entrepreneur is a role model. His or her success will encourage many others to stand up, care and organize," remarked Bill Drayton. As 2012 gets underway, it's a good message to go into the new year with. Let's get to work.

Posted by Turkish Philanthropy Funds at 11:14 AM

Recommend this on Google

1 comments:

Roger Hamilton said...



Roger Hamilton

Very creative information

This was truly a good example of a perfect blog for personal use.

Thanks for inspiring me. I really got great information from your relevant post. This will surely help many others.

Great thanks!

January 31, 2012 12:47 AM

[Post a Comment](#)

Links to this post

[Create a Link](#)

[Newer Post](#)

[Home](#)

[Older Post](#)

Subscribe to: [Post Comments \(Atom\)](#)



[Join the conversation](#)

BLOG ARCHIVE

- ▼ 2012 (5)
 - ▶ [February](#) (2)
 - ▼ [January](#) (3)
 - [Turkish Girl Power](#)
 - [Social Entrepreneurship on the Rise in Turkey](#)
 - [Van Earthquake Relief Fund Update #3](#)
- ▶ 2011 (27)
- ▶ 2010 (24)
- ▶ 2009 (14)

LABELS

- [Gender Equality](#) (5)
- [Guest Bloggers](#) (17)
- [News](#) (24)
- [Press Release](#) (7)
- [Rural Development](#) (1)
- [Turkish Press Release](#) (3)
- [Women Empowerment](#) (4)

BLOGS/INITIATIVES WE FOLLOW

- [Aid Watch](#)
- [Engelleri Kaldir](#)
- [Philanthropy Action](#)
- [Social Earth](#)
- [Social Entrepreneurship](#)
- [Social Philanthropy](#)
- [Turkey's Changemakers](#)

SEARCH THIS BLOG

SHARE IT

[Share this on Facebook](#)

[Tweet this](#)

[View stats](#)

[Get more gadgets for your site](#)

SUBSCRIBE TO

[Posts](#)

[Comments](#)

Simple template. Powered by [Blogger](#).